



Changes to our plans - May 2022

Lower Thames Crossing

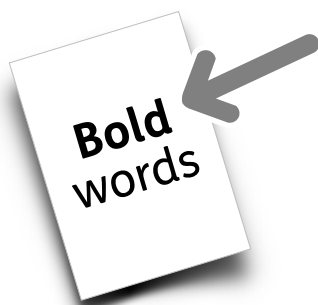


easy
read

Contents

Page

Introduction	4
You said, we did	5
Changes suggested by local people	8
Changes suggested by councils and organisations	13
Other changes	16
What do you think?	18
Have your say	19
For more information	23



In this easy read document, difficult words are in **bold**. We explain what these words mean in the sentence after they have been used.



Some words are [blue and underlined](#). These are links which will go to another website which has more information.

Introduction



National Highways is planning to build a new road between Kent, Thurrock, Essex and Havering.



The new road is called the Lower Thames Crossing. It will go through a new tunnel under the River Thames.

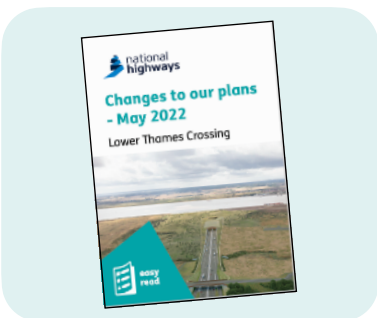


Getting it right

We want to make sure that our plans are right for local people.



At each stage of our plans, we have asked people what they think and then made changes after listening to what people said.



This document explains some changes to our plan. We want to know what you think before we make a final decision.

You said, we did



In 2021, we asked you what you thought about the plans so far.

More than 3,000 people told us what they thought.



Most people liked our plans to build the Lower Thames Crossing.



Nearly half of people liked our plan to run the Lower Thames Crossing.



Some people did not like our plan.



Others were not sure.



Over half of people liked the changes we made to the plan in 2021.



Most people liked our plans to use land to build the Lower Thames Crossing.



Some people did not like our plan.



Others were not sure.



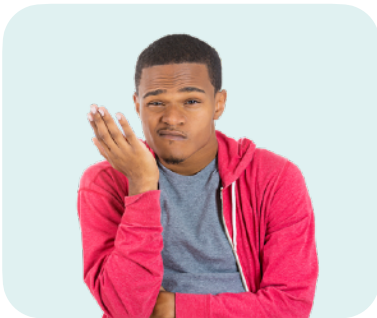
Most people liked our plans for new open space at Tilbury Fields.



Most people felt that we listened to them every time we asked what they thought of our plans.



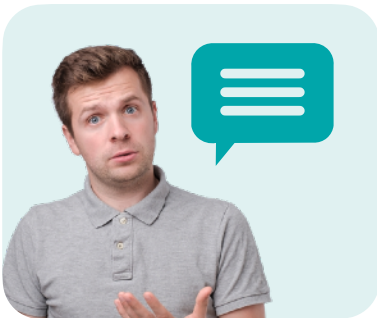
Some people think we did not listen to them.



Others were not sure.

Changes to the plan

We have made changes to the plan after listening to:



- What people said about how communities would be affected.



- What councils and organisations said.

Changes suggested by local people

We listened to what local people said and we have made these changes:

Gravesham



- We will now take over all of Southern Valley Golf Club so that more land can be used by the local community for leisure.



- Instead of planting trees to the north of Shorne Ifield Road, we will now plant them to the south of the road. This will save a historical site that has recently been found to the north of the road.



- We now plan to lay electricity cables under the road and footpath on a section of the A2 Roman Road and Pepper Hill. This is so we can keep some of the bushes and trees along the road.



- We have now created a new design for the Hever Court footpath and cycle way north of the junction between the Lower Thames Crossing and the A2. This will be better for horse riding.



- The footpath near Michael Gardens will be just for walking and cycling, not for horse riding.



- We now plan to make the footpath next to the A226 Gravesend Road good for walking, cycling and horse riding.

Thurrock



- We want to change our plans for Tilbury Fields so there is space for a new Thames **Freeport**.

A **Freeport** is a government plan to help create jobs in the area.



- We now want to put the new water pipeline around Coopers Shaw Road and not Dock Road.

This should be better for local people.



- We now plan to create new footpaths between Coalhouse Fort, Bowater Batteries and East Tilbury.



- We are now planning a new **link road** from the Orsett Cock Junction to the A1089. This will help people going to Port of Tilbury and Central Grays from the Lower Thames Crossing.



A **link road** is a road that links two or more major roads or junctions.



- We now want to change the route of a gas pipe in Orsett so it doesn't affect a historic monument and some old trees.

Havering



- We now plan to have the electricity cables west of Clay Tye Road above ground, on pylons already there, rather than underground.

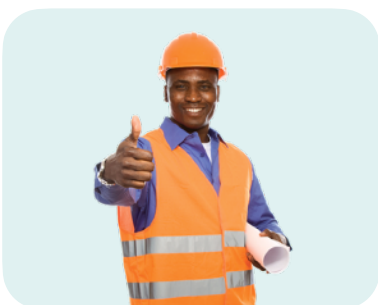


This would protect the **allotments** in the area.

An **allotment** is a patch of land for growing flowers or vegetables.



- We plan to build a new bridge for walkers, cyclists and horse riders across the A127 linking Moor Lane to Folkes Lane.



- We now plan to have the area for our workers to the east of Tyas Stud Farm. This means fewer homes would be affected.



Brentwood

- We now want to improve the bridge where the A127 crosses the new road so that horses can use it.

Changes suggested by councils and organisations

We listened to what local councils and organisations said, and we have made these changes:

South of the Thames in Kent



- We have changed where we are planting trees near the Shorne Ifield Road. This is so that we do not damage an important site for history.



South of Gravesend

- We now plan to use more land for the work along the A2, Roman Road and Pepper Hill.



This is so that we can make a safe space to put electricity cables.



This also means that we would not have to close a cycle lane.



Thurrock

- We now want to use part of the land of the old Tilbury Power Station while we are building the new road.



- We now don't want to move the underground water pipe along Coopers Shaw Road and Dock Road.



- We now want to put the water pipeline around Coopers Shaw Road. This will affect land north of Coopers Shaw Road while the work is being done.



- We have changed where we will put electricity, water and gas pipes near Station Road. This will help local wildlife.



- We now don't want to put electricity and gas pipes near Hornsby Lane, Gowers Lane and Farm Road.



- We now don't want to move the pipeline at Barking power station.

Brentwood



- We now don't want to move a gas pipeline at Warley Street near Junction 29 of the M25. We also don't want to build a gas works at Warley Street.

Other changes



We now want to build a bridge so that emergency vehicles can cross the new road. Only emergency vehicles will be able to use this bridge.



More space to protect the environment

We want to use more of the farm land in Brentwood, Thurrock, Shorne Woods and along the M2 near Bluebell Hill.



We want to create more woodland to plant trees and other plants.



We want to do this to help further protect the environment once the new road is open.

Landscaping



Landscaping is making the area around the new roads and tunnels look nice.



It can also reduce noise from the cars on the new road.

We have changed our plans for the design of landscaping near North Ockendon around:



- The junction between the A13 and A1089.

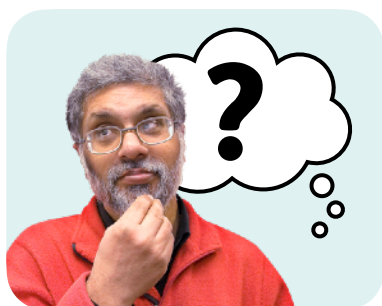


- The junction between the M25 and the Lower Thames Crossing road.



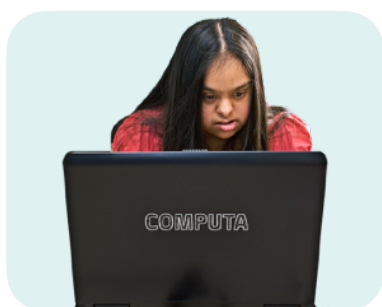
We are also going to make the new road higher near North Ockendon. This will mean we don't have to dig out so much earth.

What do you think?



We want to know what you think about the changes to our plans.

Please tell us by:



- Filling in our online questionnaire. You can find this at: www.ltconsultation2022.nationalhighways.co.uk/



- Writing to us at:
FREEPOST LTC CONSULTATION
That's all you have to put on the envelope. You don't need a stamp.



- Email:
ltc.consultation@traverse.ltd



We need to know what you think by 11.59pm on Monday 20 June 2022.

Have your say

We are holding some meetings where you can come and tell us what you think of our plans.

Kent and Gravesham



- Friday 20 May
2pm - 8pm
Cascades Leisure Centre
Thong Lane
Gravesend
DA12 4LG



- Monday 23 May
2pm - 8pm
Village Hotel - Maidstone
Castle View
Forstal Road
Kent
Maidstone
ME14 3AQ



- Thursday 9 June
2pm - 8pm
Bridgewood Manor Hotel
Near Bluebell Hill
Walderslade Woods
Chatham
ME5 9AX



- Friday 10 June
2pm - 8pm
Shorne Village Hall
16 The Street
Shorne
DA12 3EA

Thurrock, Essex and Havering



- Thursday 19 May
2pm - 8pm
The Civic Hall
Blackshots Lane
Grays
RM16 2JU



- Friday 27 May
2pm - 8pm
North Street Hall
24 North Street
Hornchurch
RM11 1QX



- Monday 6 June
2pm - 8pm
East Thurrock Community Association
77 Corringham Road
Stanford-le-Hope
SS17 0NU



- Tuesday 7 June
2pm - 8pm
Tilbury Community Association
Civic Square
Tilbury
RM18 8AA



- Monday 13 June
2pm - 8pm
Orsett Hall Hotel
Prince Charles Avenue
Orsett
RM16 3HS

For more information

If you need more information please contact us by:



- Email:
info@lowerthamescrossing.co.uk



- Phone: 0300 123 5000



- Website:
www.ltcconsultation2022.nationalhighways.co.uk

This Easy Read information has been produced by easy-read-online.co.uk